

Masport®

DOMESTIC ROTARY MOWERS

SERIES - 19

<u>Part Number</u>	<u>Model</u>	<u>Engine</u>
578714	650ST 2'n1	B&S Series 625EX

Month and Year of First Manufacture - June 2017

Starting Serial Number - 8150575



Issue A.0
ECN 03606
July 2017 PB
REF # 778714S

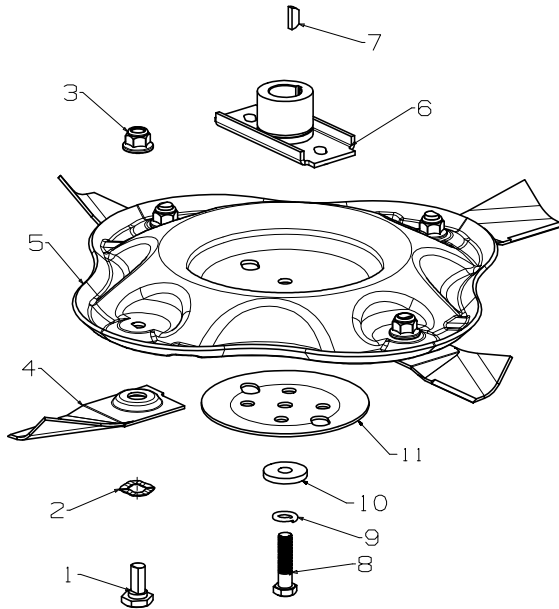


S19 650ST 2'N1

Masport

Issue A.0
ECN 03606
July 2017 PB
REF # 778714S

485mm Disc Blade - Wavy, Assembly

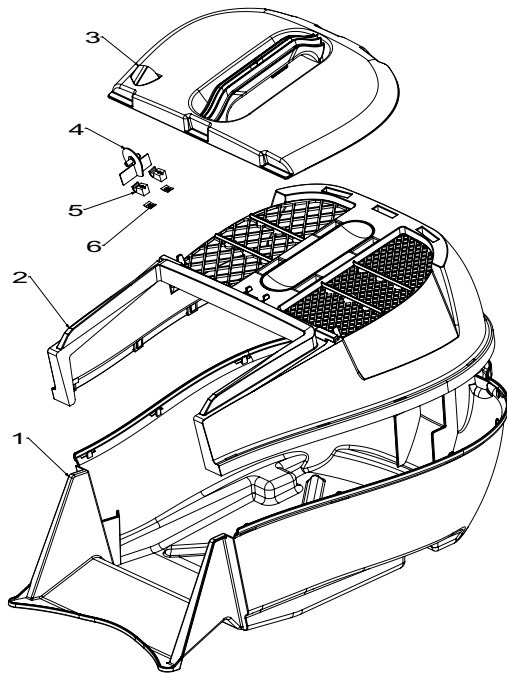


Item	Part No	Description	Qty
1	581707	Bolt- Pivot M10 x 22	4
2	580693	Washer, Wavy 13.4 x 24.2	4
3	503672	Nut, M10 Hex Nyloc Flange	4
4	983310	Blade- Quick Cut, 485mm	4
5	783314	KIT-Disc Blade Wavy (Includes items: 8, 9, 10, 11)	1
6	014173	Driver Assy-Blade , 7/8"	1
7	500636	Key, Woodruff - 5/8"x5/32"x1/4"	1
8	503543	Bolt; Hex NF 3/8" x 1.5 NYG8	1
9	500204	Washer, Spring 3/8"	1
10	503855	Washer, Flat 9.75 x 30 x 4.0	1
11	567332	Plate- Stiffener, Disc Blade Assy	1

Blade & Bolt Sets

- 783692 Bolt Set (4)**
Includes Items: 1, 2, 3
- 783310 Blade-Quick Cut (4) 485mm**
Includes Items: 1, 2, 3, 4
- 769449 Disc Assy-Wavy (4 Blade) 485mm**
Includes Items: 1, 2, 3, 4, 5, 8, 9, 10, 11

19" Catcher Assembly - Plastic



Item	Part No	Description	Qty
1	567010	Bottom- Catcher, 19" Gry	1
2	579051	Top- Catcher, 19"	1
3	579085	Lid- Catcher, Ind 19"	1
4	582548	Indicator- Catcher	1
5	582550	Clamp- Indicator Retainer	2
6	503381	Clip- Starlock, 4 Dia	2

Replacement Catcher Assembly (Grey base is not available)

783404 Catcher Assy (Unbranded) 19" with "Grass Full Indicator" & Black Base

When ordering PLEASE QUOTE PART NUMBER & Description, NOT Illustration No.

Determine right or left hand side from standing in operating position (standing at handle).

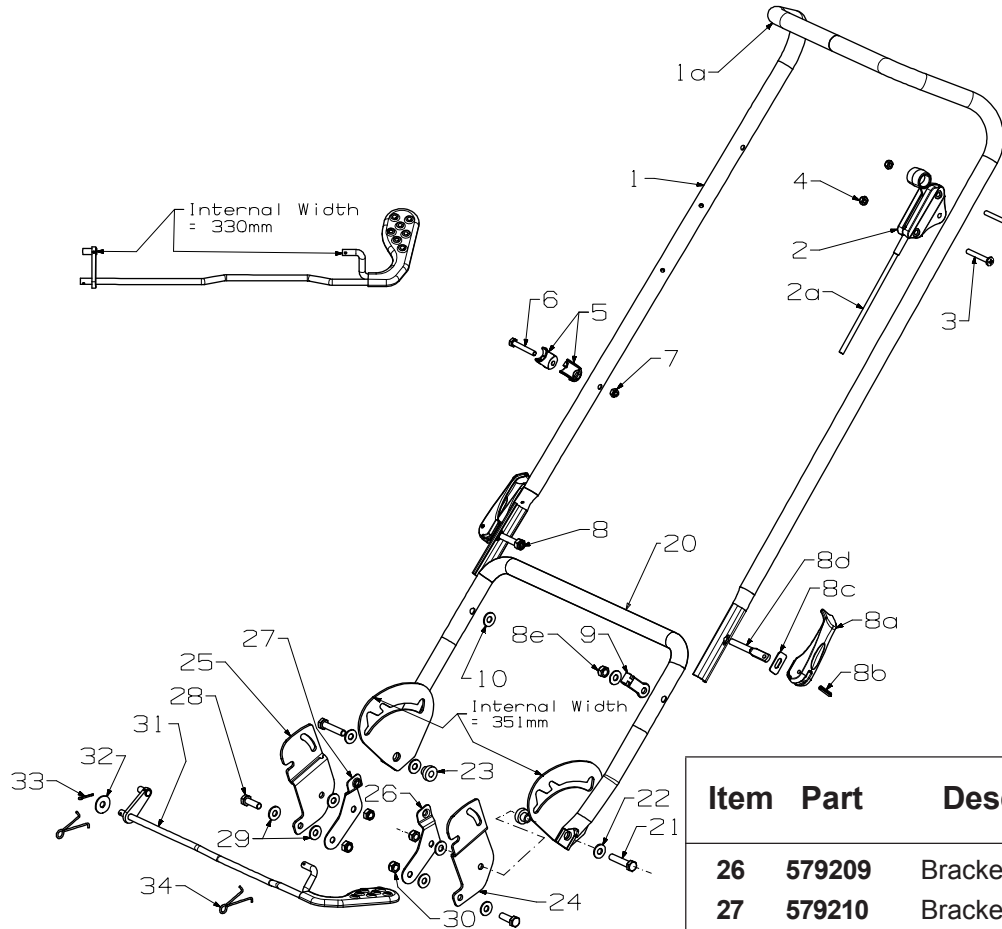
Bold Text = Assemblies, Bulleted Text * = Items included in the Assemblies & may not be available as a spares item.



S19 650ST 2'N1

Masport

Issue A.0
ECN 03606
July 2017 PB
REF # 778714S



Item	Part	Description	Qty
1/1a	767510	Handle & Sleeve PVC/Chr	1
2/2a	779321	Throttle-Ctrl,+VE & Cable Assy	1
3	503700	*Screw, Pan M5 x 35	2
4	503511	*Nut, M5 Hex Nyloc	2
5	703856	Comfort Start Kit	1
6	503794	*Screw, Set M6 x 40	1
7	501764	*Nut, Nyloc M6	1
8	779755	Cam Lock Assy	2
8a	582419	*Lever- Handle, Locking	1
8b	016777	*Washer, Slipper	1
8c	503369	*Pin, Tension 5.0x25	1
8d	583041	*Stud- Handle Lock, 61mm	1
8e	501793	*Nut, M8 Hex Nyloc 8 Thck	1
9	581527	Retainer-Control Cable, Handle	1
10	501606	Washer, Flt 8x19x1.6	2
20	967366	Handle Assy- Lower, "U" LFT 19"	1
21	501716	Screw, Set M8 x 35 Hex	2
22	501606	Washer, Flt 8x19x1.6	3
23	567382	Spacer- Handle, Lower Lift	2
23a	501606	Washer, Flt 8x19x1.6	1
24	567369	Plate- Mount, Handle LH	1
25	567368	Plate- Mount, Handle RH	1

Item	Part	Description	Qty
26	579209	Bracket- Flap, LH	1
27	579210	Bracket- Flap, RH	1
28	501597	Screw, Set M8 x 20 Hex	2
29	501606	Washer, Flt 8x19x1.6	6
30	501793	Nut, M8 Hex Nyloc 8 Thck	4
31	967383	Rod Assy Adj- Lower Lift	1
32	502149	Washer- Dished	1
33	501056	Pin, Cotter 2.3dia x 16	1
34	567381	Spring- Ergo Lift	2
NOT ILLUSTRATED			
	503054	Tie- Nylon Cable, black	1
	508778	Stop- Rope	1
	564248	Hook- Lift Handle, Catcher	1
	567074	Decal, HSG S19 650	1
	582049	Decal, Flap Caution	1
	582062	Decal, Height Combo	1
	583152	Owners Manual	1
	583344	Decal, Catcher Instruction	1

When ordering PLEASE QUOTE PART NUMBER & Description, NOT Illustration No.

Determine right or left hand side from standing in operating position (standing at handle).

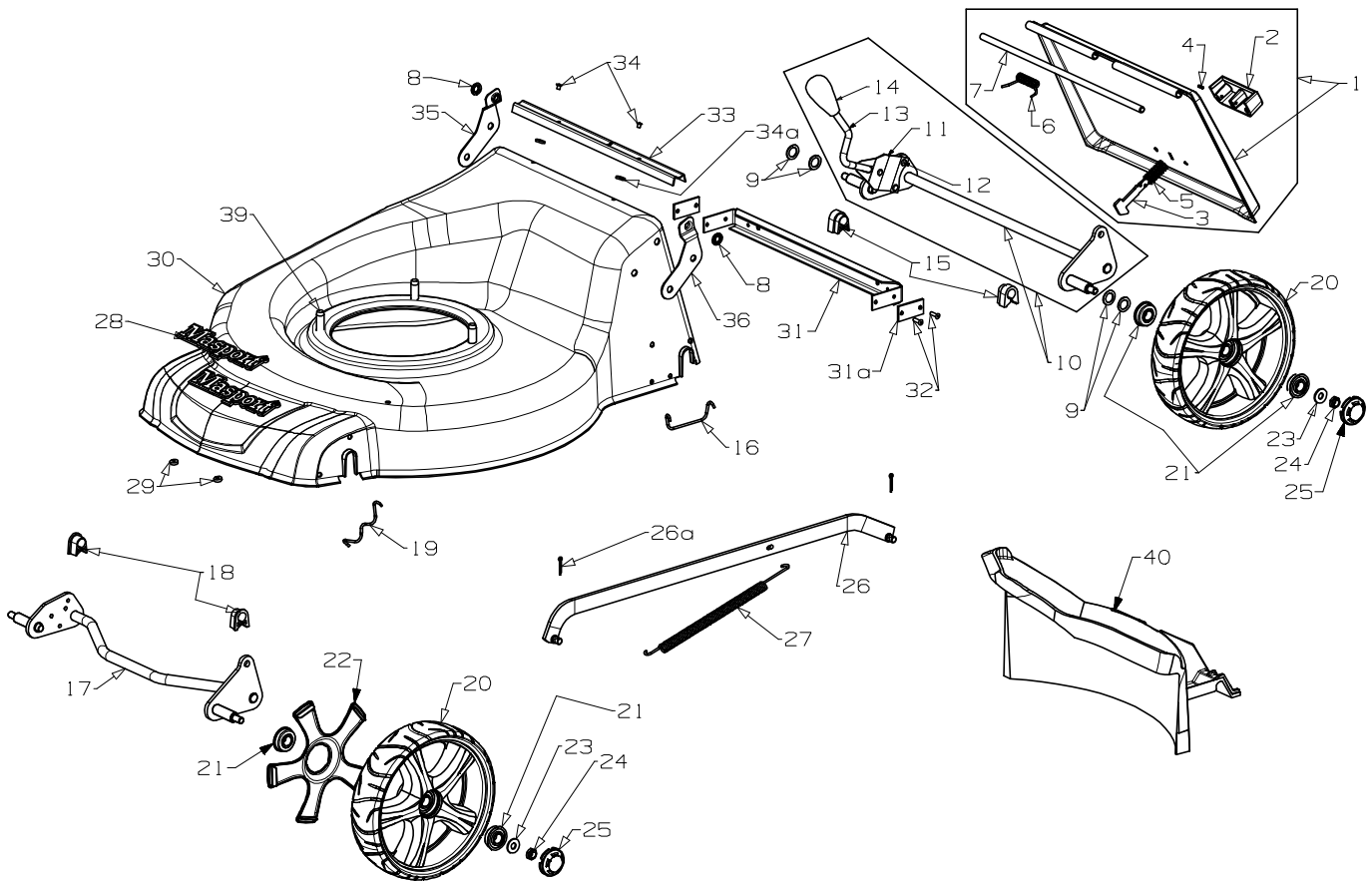
Bold Text = Assemblies, Bulleted Text * = Items included in the Assemblies & may not be available as a spares item.



S19 650ST 2'N1

Masport

Issue A.0
ECN 03606
July 2017 PB
REF # 778714S



Item No	Part No	Description	Qty	Item No	Part No	Description	Qty
1	973862	Flap Assy- Steel, Black	1	20	573706	Wheel Assy-200mm Mag Svr	4
2	580602	*Handle-Flap	1			(Includes 2 x 551212 per wheel)	
3	981650	*Latch-Flap, Barbed	1	21	551212	Bearing- Wheel	8
4	502019	*Pin, Tension 3.0x8	1	22	579205	Cover Inner Wheel	2
5	581106	*Spring- Flap Latch	1	23	501606	Washer, Flat 8 x 19 x 1.6	4
6	579213	*Spring-Flap, 19" STL	1	24	503831	Nut, M8 Hex Nyloc 6 Thck	4
7	583312	*Wire-Flap Pivot 8mm x 325mm	1	25	579204	Hub Cap, Btnn Mag Svr	4
9	503301	Washer, Flat 1/2 x 3/4 x 18g	4	26	571034	Rod Assy-Connecting, 19"	1
10	783302	Axle Assy- Rear, Complete	1	26a	501056	Pin, Cotter 2.3Dx16	2
11	580649	*Spring- Leaf	1	27	581463	Spring-Counter Balance	1
12	503373	*Rivet- F/HD 3/16x27/64"	3	28	581240	Nameplate MASPORT	1
13	983329	*Rod- Height Selector, 19"	1	29	503150	Clip- Starlock 5mm dia	2
14	581729	*Knob-Height Lever	1	30	773641	HSG-Assy Stl 19" XFQ Co TTNM	1
15	580668	Bush-Pivot, Axle Rear	2	31	583512	*Brace-Rear, 19" EU & Local	1
16	579292	Retainer-Axle, Rear, Stl Deck	2	31a	574532	*Plate - Rear Brace Spacer	2
17	983281	Axle Assy- Front, 200mm	1	32	503028	*Rivet-Pop, 4.0 x 7.9 73SS5-5	4
18	580030	Bush-Pivot, Axle	2	33	579211	Seal- Flap, Dust	1
19	529674	Retainer-Axle, Front "W"	2	34	581369	Rivet-Pop, 4.0 x 3.2 73SS5-2	2
				34a	502170	Washer, Nylon 5 x 12 x 2.0	2
				39	580453	Screw, S/T 3/8"x1-1/8" UNC Triblok	3
				40	579218	Insert- Mulching, 19" XF	1

When ordering PLEASE QUOTE PART NUMBER & Description, NOT Illustration No.

Determine right or left hand side from standing in operating position (standing at handle).

Bold Text = Assemblies, Bulleted Text * = Items included in the Assemblies & may not be available as a spares item.